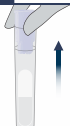


**SWIPPER™****TESTING KITS  
FOR DRUGS****Ecstasy/  
Bath Salts  
Test Kits****SW-4000****Read  
Before  
Use**

As a precaution, gloves and eye protection should be worn when handling substances and using test units. Do not puncture any part of unit. Do not remove probe after breaking the ampule. In event of a spill, rinse affected area thoroughly with water. Keep out of reach of children. Store the tubes in a dark place, not exposed to light. All results are presumptive. If necessary, further testing by a competent drug testing lab can provide additional identification.

**Test Preparation****1**

Remove the  
SWIPPER™ Cap  
from the test unit.



Ensure that the  
test tube remains  
upright in order  
to avoid the  
ampule falling  
out of the tube.

**2**

Sample the suspected  
substance or tablet with  
the SWIPPER™ Cap.

Touch or Press

**Test Preparation****3**

Return the SWIPPER™  
Cap to the test tube.  
Press firmly.

**S  
T  
O  
P**

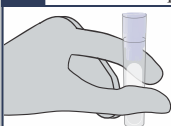
**Do not continue unless  
the SWIPPER™ Cap  
is properly secured.**

**⚠ CAUTION ⚠**

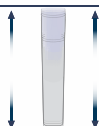
**The kit contains an acid.  
Make sure to follow all  
the safety procedures.**

**Identification****4**

With **thumb and forefinger**,  
squeeze the test tube  
until the ampule breaks.

**5**

Gently shake test up and  
down to ensure that the  
liquid touches the Cap.

**Results**

The appearance of a violet color strongly indicates  
the presence of **Ecstasy/MDMA** or its analogues.  
The color may take up to 3 minutes to develop.



The appearance of a yellow color indicates  
the presence of Bath Salts such as **MDPV**,  
**Methylone** or **Butylone**.



If after 3 minutes none of the above colors develop,  
the above listed drugs are not present.

**Disposal**

Dilute the acid with some tap water  
before disposing the kit in the trash.



ENG  
V2  
01-22



**IDenta**  
World Leader in  
Forensic Products

Manufactured by IDenta Ltd  
[www.identa-corp.com](http://www.identa-corp.com)  
Patented Technology • Made in Israel

**LOT:****EXP:**